

An aerial photograph of a city streetcar on a curved track. The streetcar is highlighted with a pink bounding box. The track curves through a city street, with buildings and a streetcar visible in the background. The overall image has a dark, blue-tinted background.

We are **Trafi** | >>

The world's leading MaaS platform



Enhanced journey planning

- Born out of Founders' need in 2013 in Vilnius, Lithuania
- 10+ years experience of running B2C journey planning
- Creator of the world's largest MaaS scheme (Jelbi)
- Creator of the first world's regional MaaS (Yumuv)
- Data curation expertise trusted by tech-giants
- Existing integrations to leading MSPs and Payment platforms
- App store ratings > 4.5



Technology trusted by



Google

lyft

gojek

Major cities and capitals in Europe are using our service



2018

Vilnius



2019

Berlin



2020

Basel, Zürich,
Bern



2021

Munich



2022

Portsmouth
& Solent



2023

Brussels



Modular architecture

Off-shelf product with fast deployment time

Transport Data expertise

Multiple payment flows

Custom development

Own routing engine

Deep in-app integrations

Trafi I >>>

Global reference for MaaS
High UX score
Value added services
Proven successful track record



yearly downtime per client <1h
never charged any penalties due to SLA breach
Trafi's support team responsiveness - 9.6/10
Satisfaction with Trafi's team - 9/10



Components - White Label MaaS Platform

White Label
App



Routing
Engine



Integration
Platform



MSP
Catalogue



Back Office



Intuitive and Seamless Journey planning



Interactive Map
Full view of the city's mobility offerings



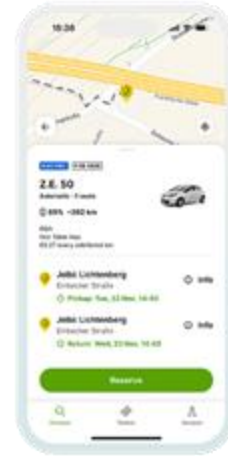
Carousel
All modes in one interface
Fares info
Live ETAs



E-Wallet
Purchase tickets and passes
Store tickets



Journey guidance
Journey legs
Accessibility info
Step-by-step planning

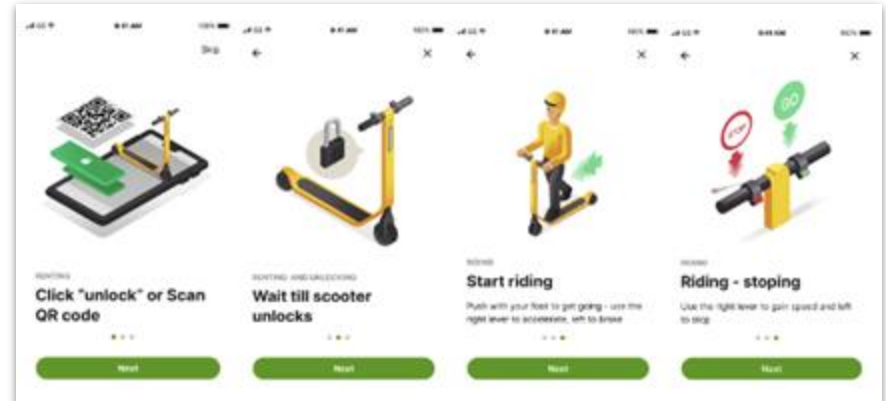


Harmonised user experience across all modes
Vehicle info
Full reservation flows
MSP Manuals
Help screens & FAQs
Fees and Pricing
Full in-app reservation & payment



Trafi MaaS Product & UX

- One account to find, book and pay for any mobility service
- Real-time door-to-door trip planning
- Rich Public Transport information and ticketing
- Shared mobility discovery
- Proven off-the-shelf app
- Customisable for specific branding requirements.
- Average App store ratings above 4.6
- Harmonised Onboarding and Help Screens



Fortnightly Release Process

Continuous feature and UX innovation

Release process and roadmap to compete with the best private journey planning apps



Universal scanner



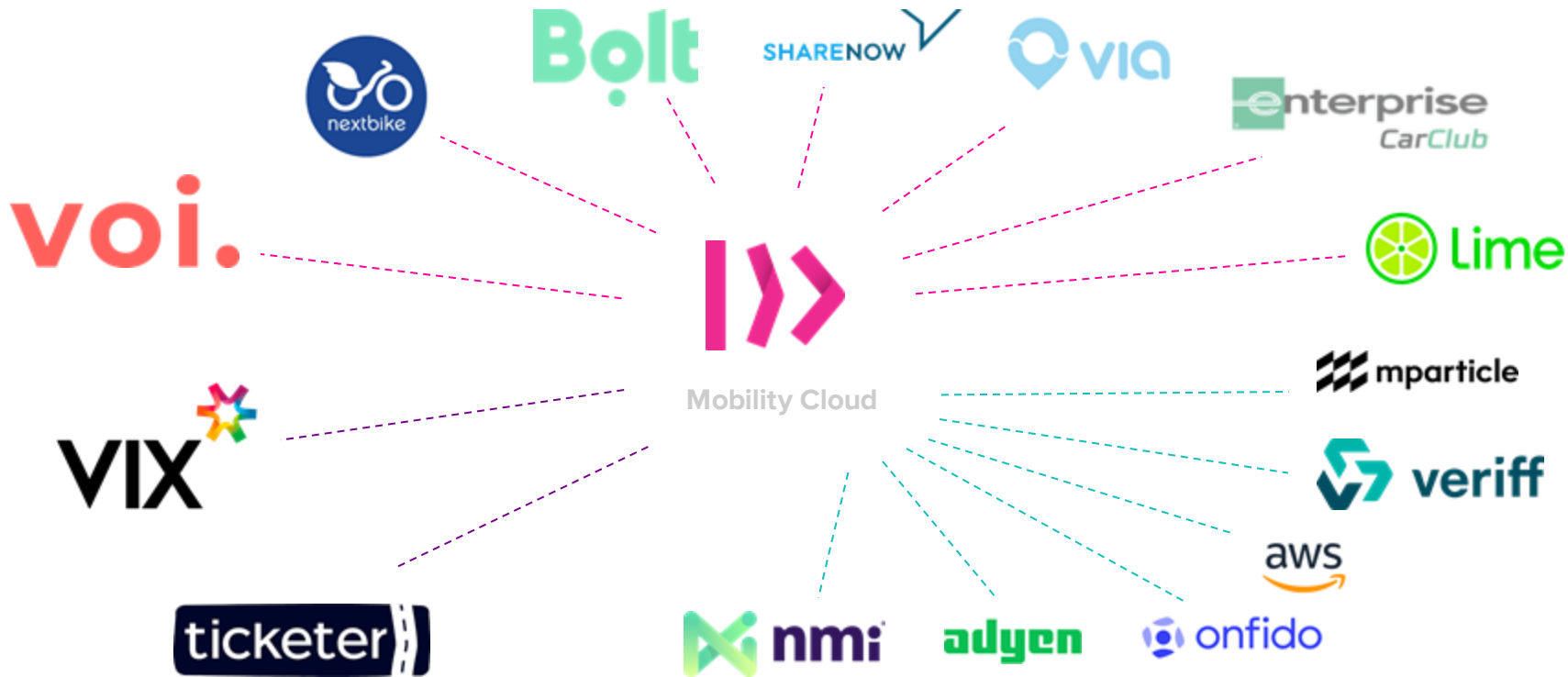
Complete public transport



MSP manuals



Largest library of deep MSP integrations worldwide.



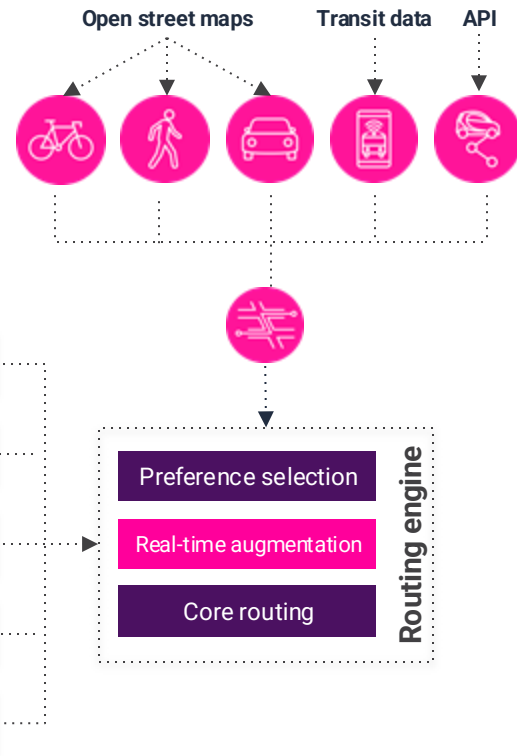
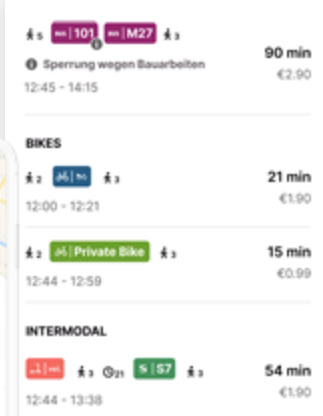
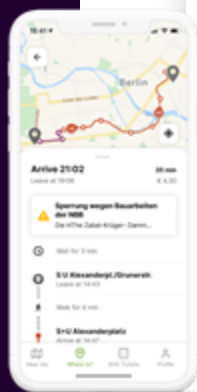
MSPs | Scooters, car share, rideshare

Ticketing | Public transport

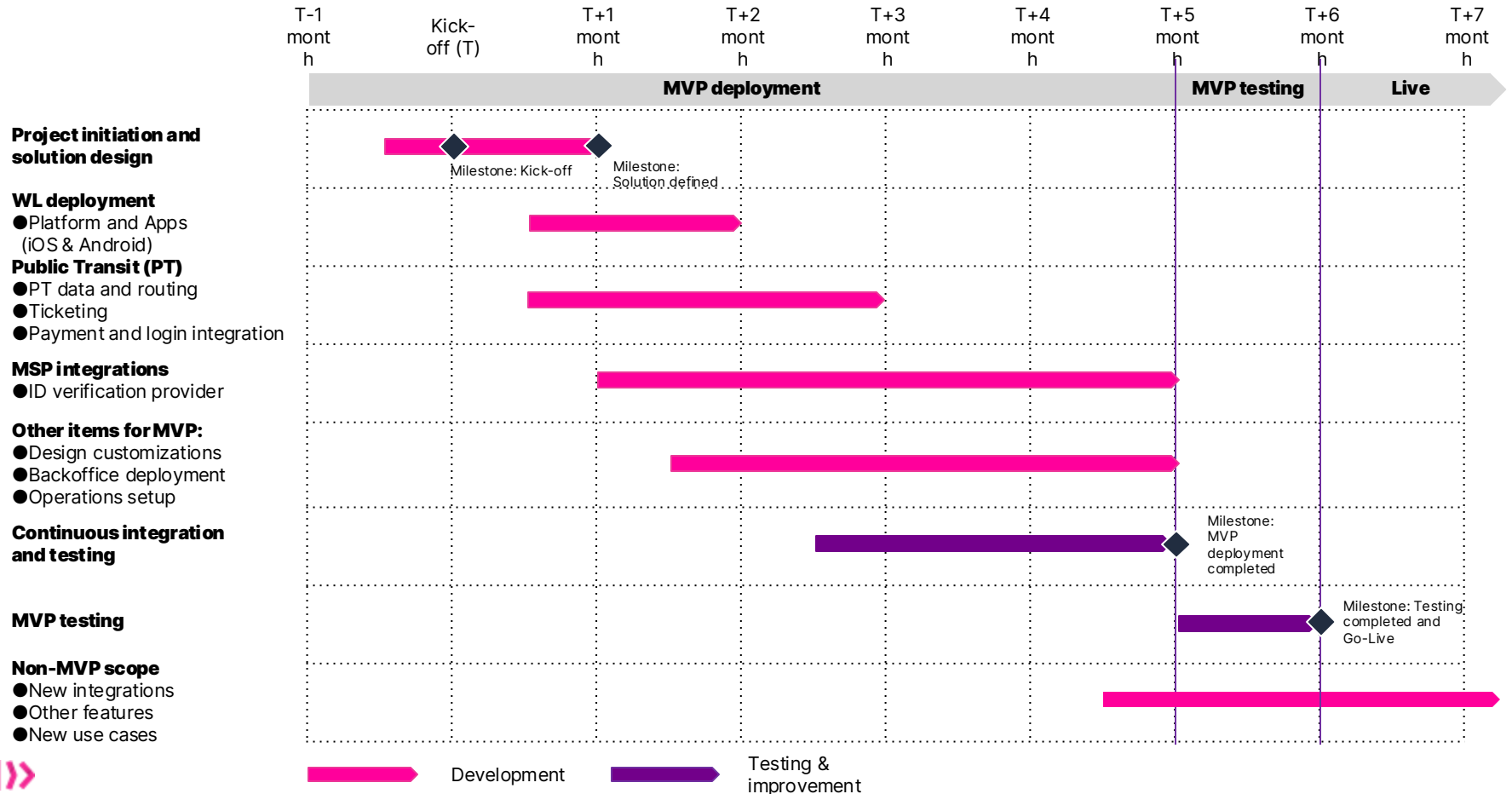
Clearing House | Payment routing, ESG data

Trafi's routing engine

- Supports **all transport** modes and combines them into multimodal journey.
- **Real-time** data is applied on top of core routing to improve the accuracy of the results.
- Ensures **relevancy**, adjusted for region specifics.
- Reflects **individual preferences**.
- A vehicle speed map is used for the **accurate ETA** and **price estimate**.



Deployment timeline



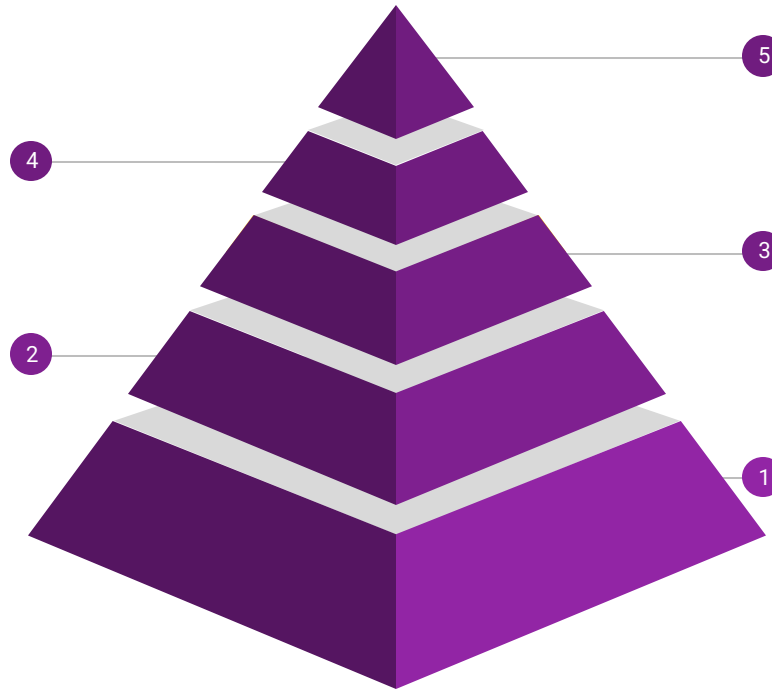
MVP Scope: the Essential Layers

MSP Integrations

- MSPs
- Ticketing provider

Public Transport Data

- Public transport data is provided
- Public Transit data sources are integrated
- Multimodal Journey Planner deployed and configured



Complete Solution

- Design customization
- Back-office Tool

Foundational Providers

- User Management & Phone verification
- Payment service provider
- User identity verification

White-label Core Platform & App

- Infrastructure set-up
- White-label platform deployed
- Android and iOS Apps made available

Trafi I>>

We share the same purpose.
Let's make it a reality **together.**

daniel.stead@trafi.com

MaaS & Urban Mobility Specialist

