



LUNDS
UNIVERSITET

Interreg
North Sea

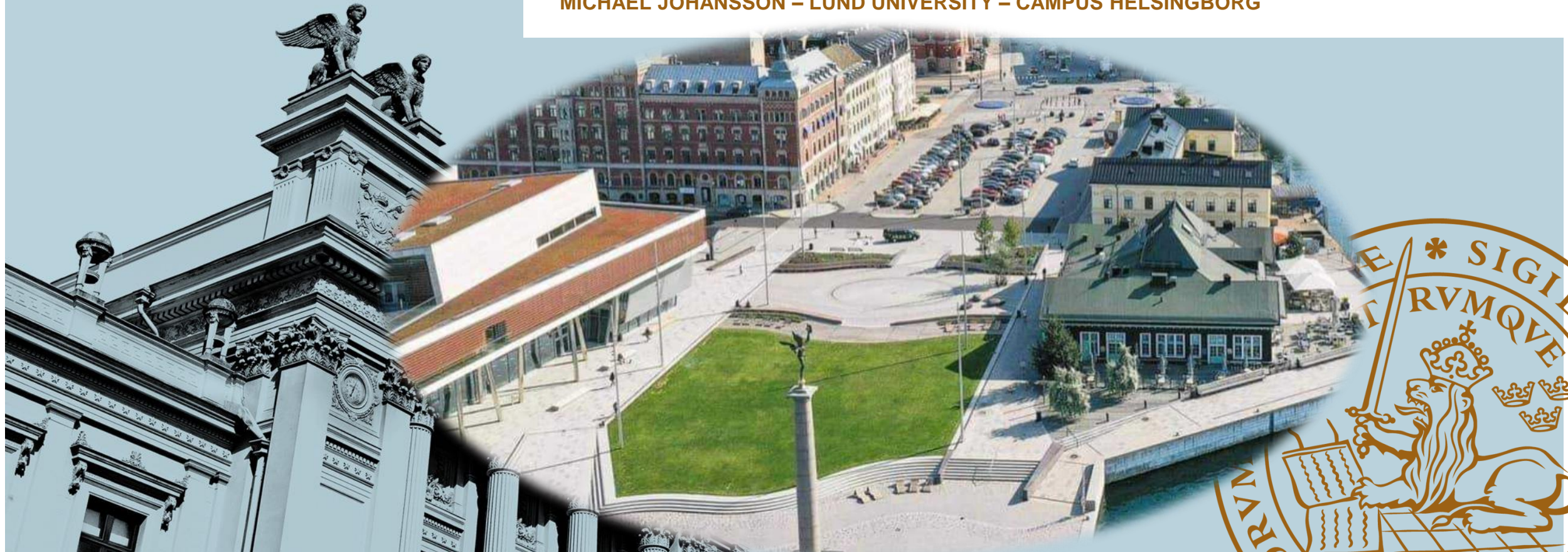


Co-funded by
the European Union

SHARE-North Squared

The Role of Shared Mobility in Policies on Spatial Use and Green Space

MICHAEL JOHANSSON – LUND UNIVERSITY – CAMPUS HELSINGBORG



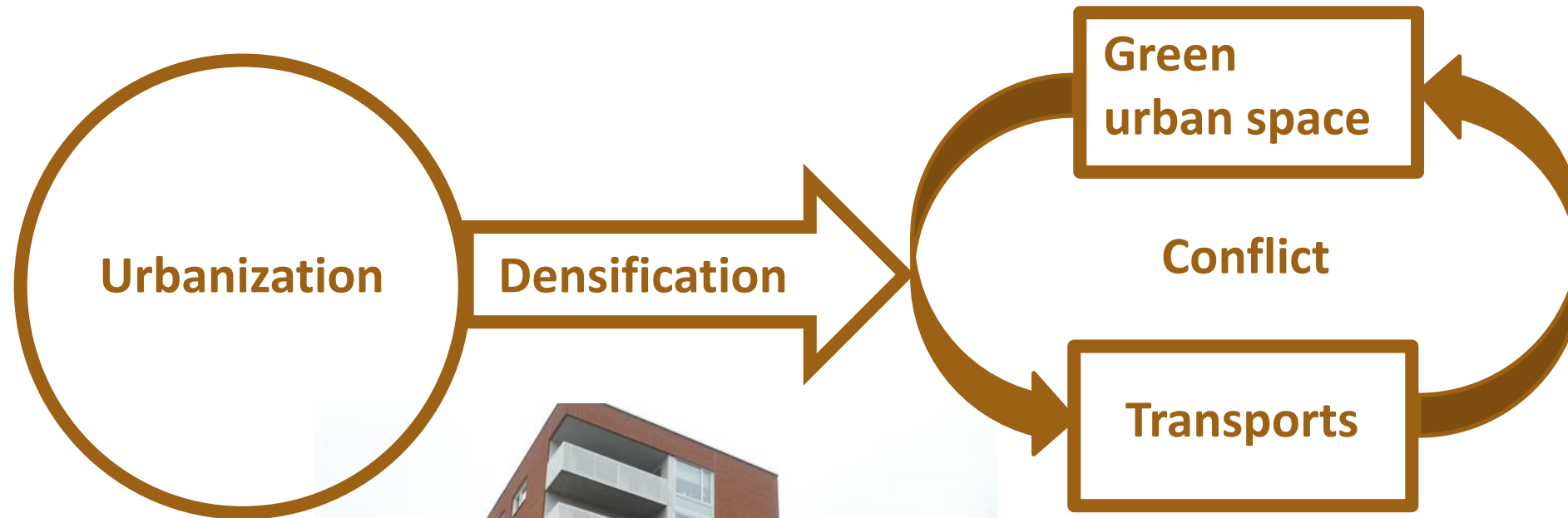
Lund university research

SHARE-North Squared

- Resilient & Adaptive cities:
Climate change/CO2-balances
Natural urban ecosystem services and
Nature-based solutions
- Sustainable cities:
Mobility/Transportation/Logistics
Urban spatial planning
Fossil free/alternative/renewable fuels

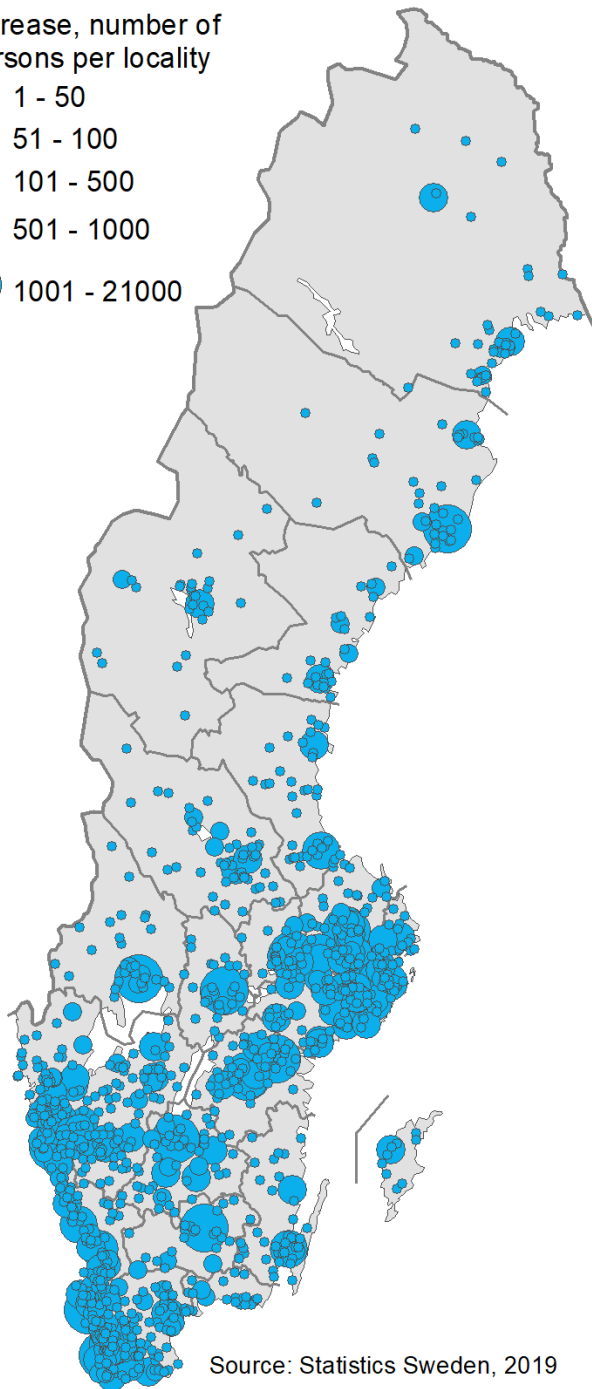


The challenge



Increase, number of persons per locality

- 1 - 50
- 51 - 100
- 101 - 500
- 501 - 1000
- 1001 - 21000



Source: Statistics Sweden, 2019

42 m²/pers



50 m²/pers

SHARE-North Squared

138 apartments

138 parking spaces - 1 for each apartment








Use of space: 3.450m²
Costs: 307.000 €

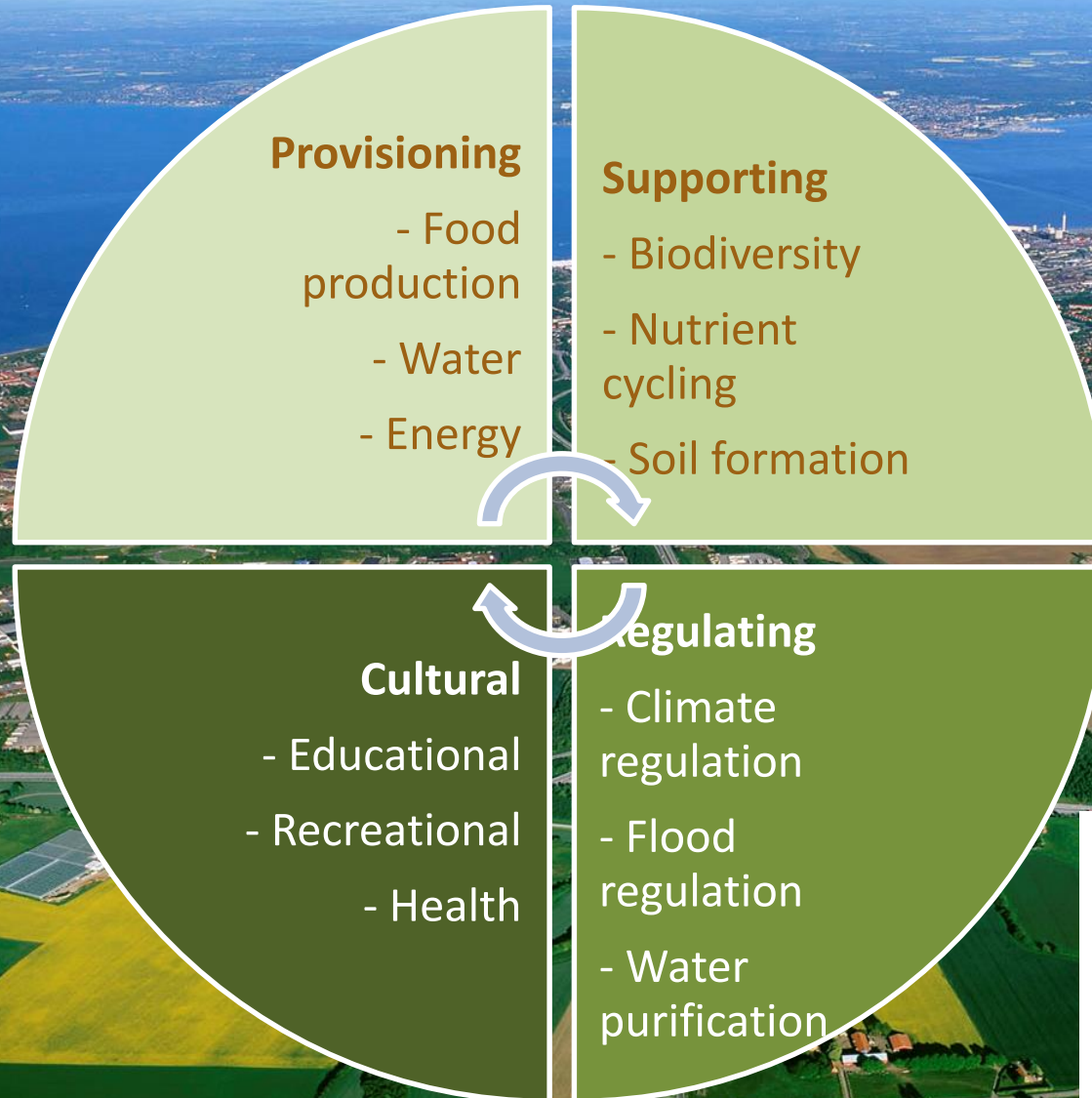
Use of space 25m²/parking space incl. for manoeuvring

10 car sharing spaces



Demand urban space (20 m2) 0,2 parking / apartment	Football field 	Olympic swimming pool 	Tennis court 	Curling lane 	Table tennis table 
Difference “too late (due to bad planning) scenario”	34 (8)	192 (38)	2 666 (533)	1 200 (240)	57 124 (11 424)
2022 “could have been-scenario”	152 (30)	870 (174)	12 080 (2416)	5 436 (1087)	288 857 (51 771)
2035 “can be (but not so good) scenario”	170 (34)	973 (194)	13 508 (2701)	6 079 (1 216)	289 466 (57 893)

Importance of green space



Interreg
North Sea



Co-funded by
the European Union

SHARE-North Squared

Urban natural ecosystem services

54 360 cars X 20 m² = 1 087 200 / 10 000 (1 hectare)
= 108,72 hectares X 19 ton CO₂-uptake (per hectare)
= 2 065 ton loss of CO₂-uptake potential per year



OR



The Role of sustainable spatial use and green urban space – our research indicates that:

- First we shape the cities – then the cities shapes us
- Every city got as much traffic as space (and we) would allow (work with action plans for shared mobility)
- The importance is the actual life and vegetation between buildings
- The city should be approached as a meeting place
- Cities should not be addressed as problems - cities are solutions

How to achieve liveable cities – we have to change:

- From one function to multifunctional space
- From standard solutions to tailored solutions
- From selling a product to providing a service
- From object status value to sharing value (and sharing space)
- From strict urban structures to sustainable processes

Importance of implementing sustainable streetscapes in the local micro-geography

- Green urban nature-based solutions for resilient cities

Michael Johansson²

² department of service studies, Lund university, Campus Helsingborg, Sweden

Acknowledgement

The research behind this study was supported by Interreg project SHARE-North Squared - Growing Shared Mobility in Housing Developments and Living as a Service:

Interreg
North Sea



Co-funded by
the European Union

SHARE-North Squared

SHARE-North Squared (SN²) aims to increase the sustainability, resource and spatial efficiency of real estate developments as well as the affordability of housing by integrating shared mobility as a means of supporting multimodal travel behaviour and for reducing car ownership, car dependency and the demand for parking.

SHARE-North Squared is an Interreg North Sea project co-funded by the European Union. The project was approved in 2022 and runs until 2026. The SN² partners are City of Bremen (DE), GEWOBA (DE), M pact (BE), Autodelen.net (BE), City of Helsingborg (SE), Lund University (SE), City of Aarhus (DK), Tækker (DK), City of Utrecht (NL), AM (NL), City of Stavanger (NO), Kolumbus (NO), Gustave Eiffel University (FR), City of Mechelen (BE), Woonland (BE) and Housing Europe (BE).

Keywords

Sustainable streetscapes, Urban nature-based solutions, sustainable development, micro-geography, ecosystem services, resilient cities, SHARE-North squared.

Parking for sustainable cities



- How to understand innovative parking development

Author:

Michael Johansson²

² department of service studies, Lund university, Campus Helsingborg, Sweden

Thank you!

SHARE-North Squared

Michael Johansson
Lund University
Campus Helsingborg
Service Studies

michael.johansson@ses.lu.se

