

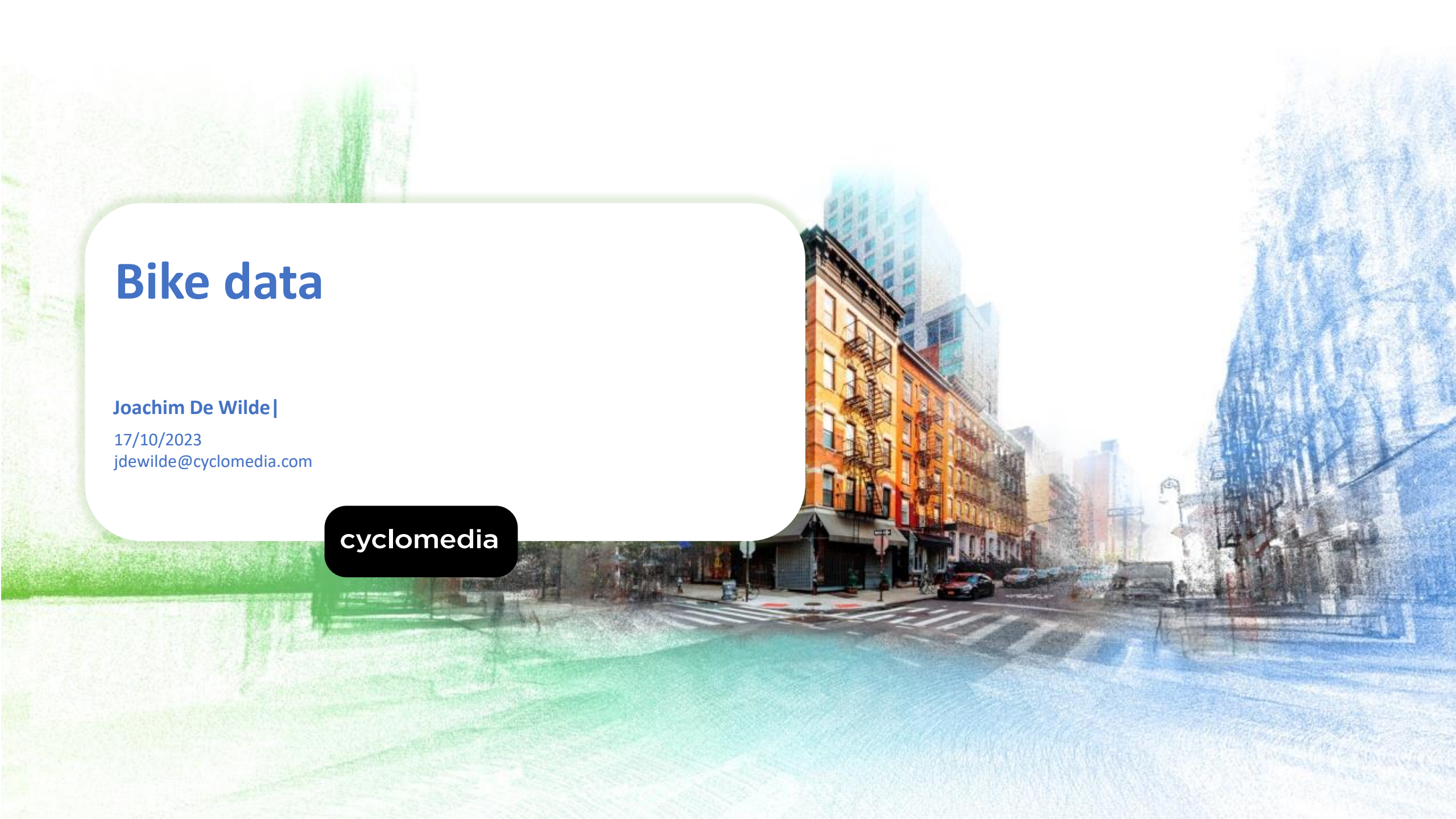
# Bike data

Joachim De Wilde |

17/10/2023

[jdewilde@cyclomedia.com](mailto:jdewilde@cyclomedia.com)

**cyclomedia**



# Cyclomedia in Facts & Figures

## Company



Offices in the **Netherlands** (HQ), **US** and **Germany**



**270**

Enthusiastic and skilled employees



**>400.000**

planned km's of road to record in 2022 with



**70**

Cars & Recording systems

## Data



**600.000.000**

Of 360° panoramic photos (cycloramas)



**> 80.000.000**

Image recordings per year



**> 2.500.000**

Clicks per week



**> 3,5**

Petabytes of data in the cloud

## Technology



**10cm**

Average positional absolute accuracy

## Clients



**> 1.000**

Professional customers worldwide

# Cyclomedia's Purpose

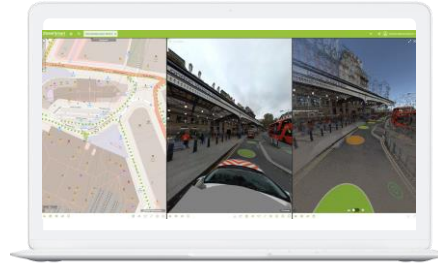
01



## Data capture

Recording vehicles, camera systems and LiDAR scanners

02



## Data visualisation

Large quantities of rich visual data is quickly and easily accessible on our Street Smart platform

03



## Data insights

Explore data insights to create a better world tomorrow

## Real data. True understanding. Big impact.

Create valuable insights to understand the complexities and the context of the world around you

# Pavement conditions



## Consistent quality

with automated defect detection.



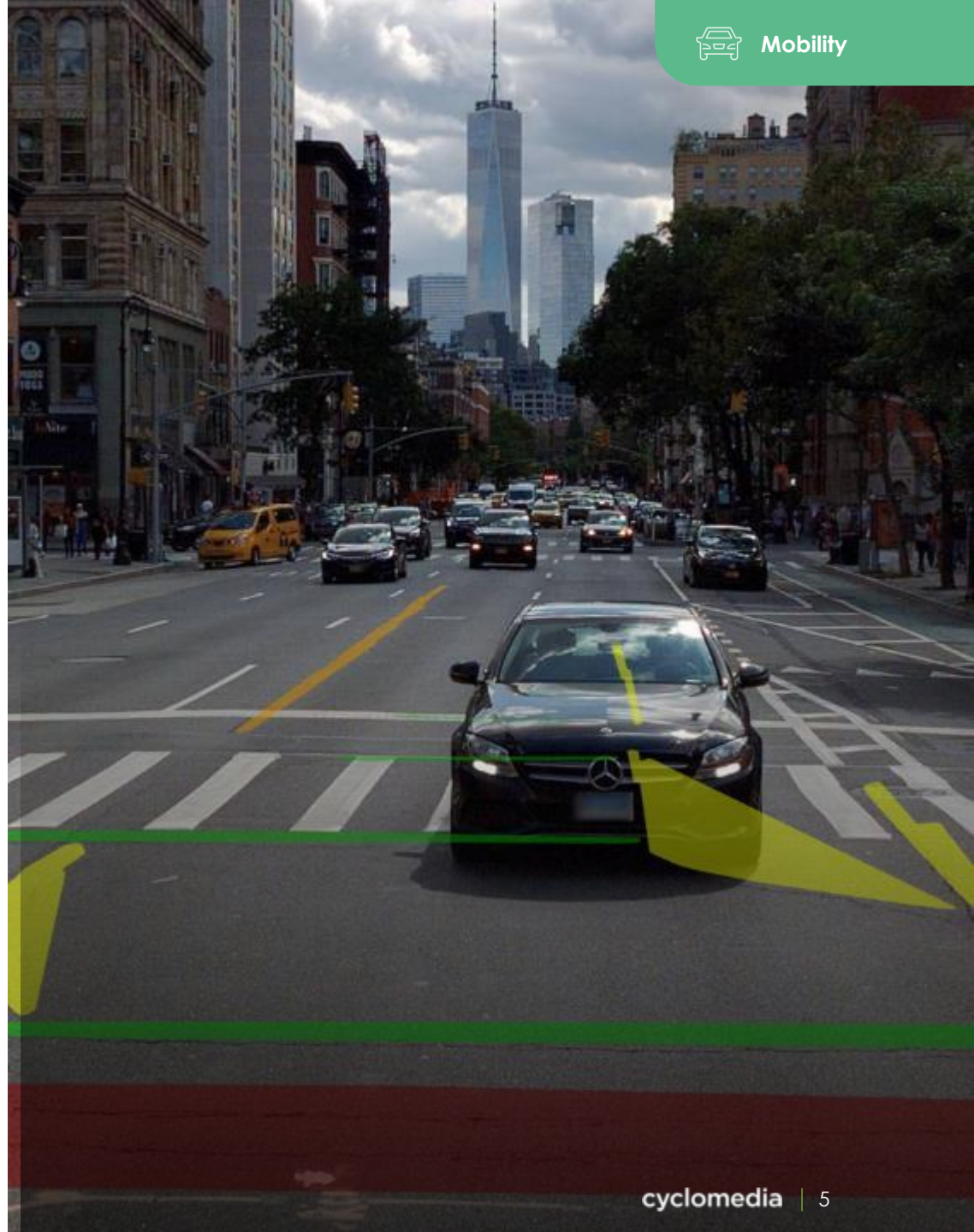
## Future proof planning

by monitoring of the road surface conditions.



## Reduced cost

with fewer site visits and faster data delivery.



# Mobility infrastructure management



## Reduced cost

with fewer on-site visits and faster data delivery.



## Fewer ghost-assets

with up-to-date data.



## Less data management

valuable employees can work on other tasks.



Stadt Leipzig



# Future proof city mobility



## Data-driven decision making

with precise data



## Increase livability


with better air quality and faster access to amenities



## Ground truth

that enables future planning and impact analysis



A man in a brown coat is riding a white bicycle on a city street. The street has a green-painted section on the left and a blue-painted section on the right. In the background, there is a tram on the left and a large, multi-story building on the right. The sky is overcast.

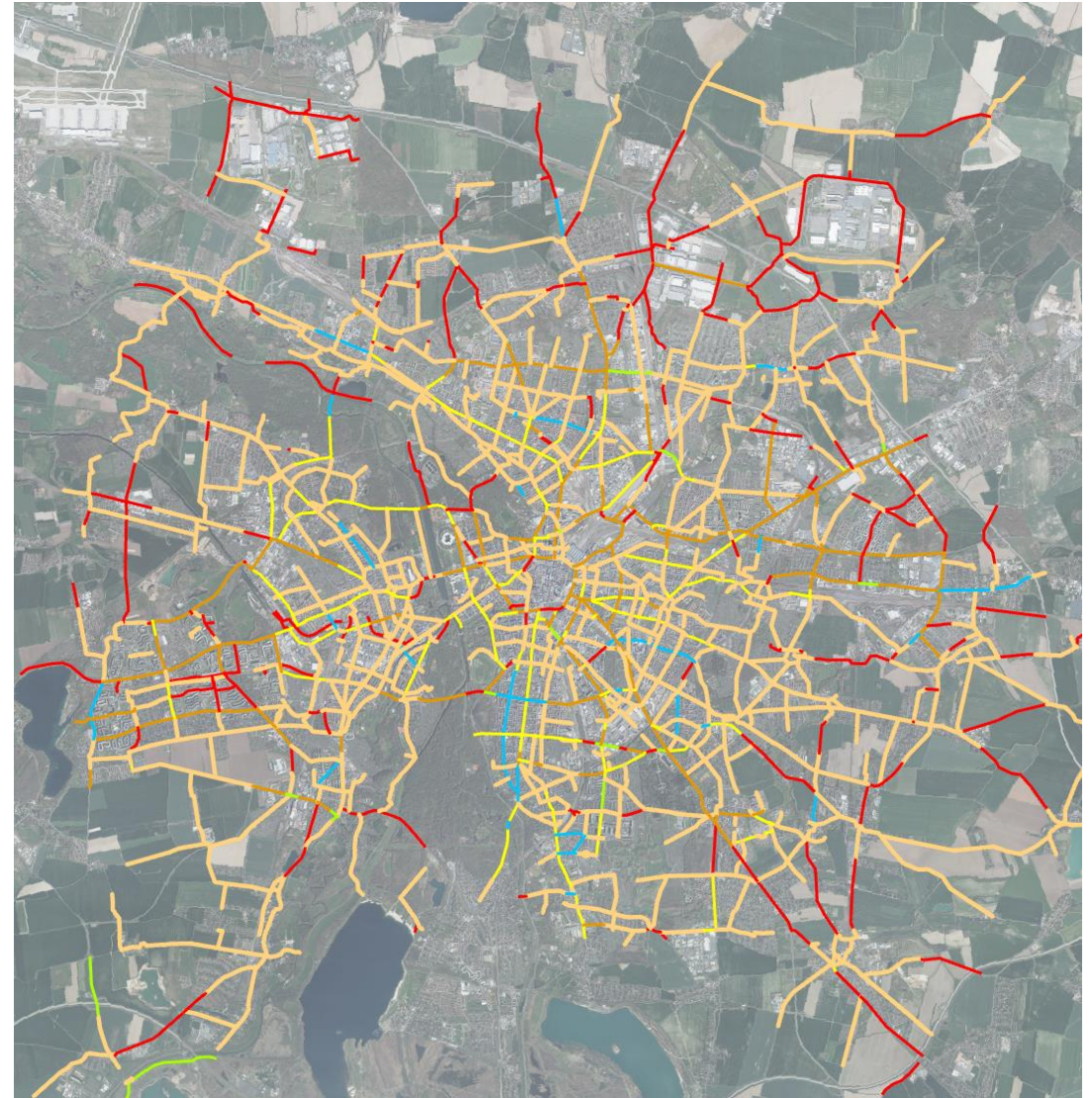
# Road condition analysis for Main Bicycle Network

cyclomedia

# Capturing the bicycle network

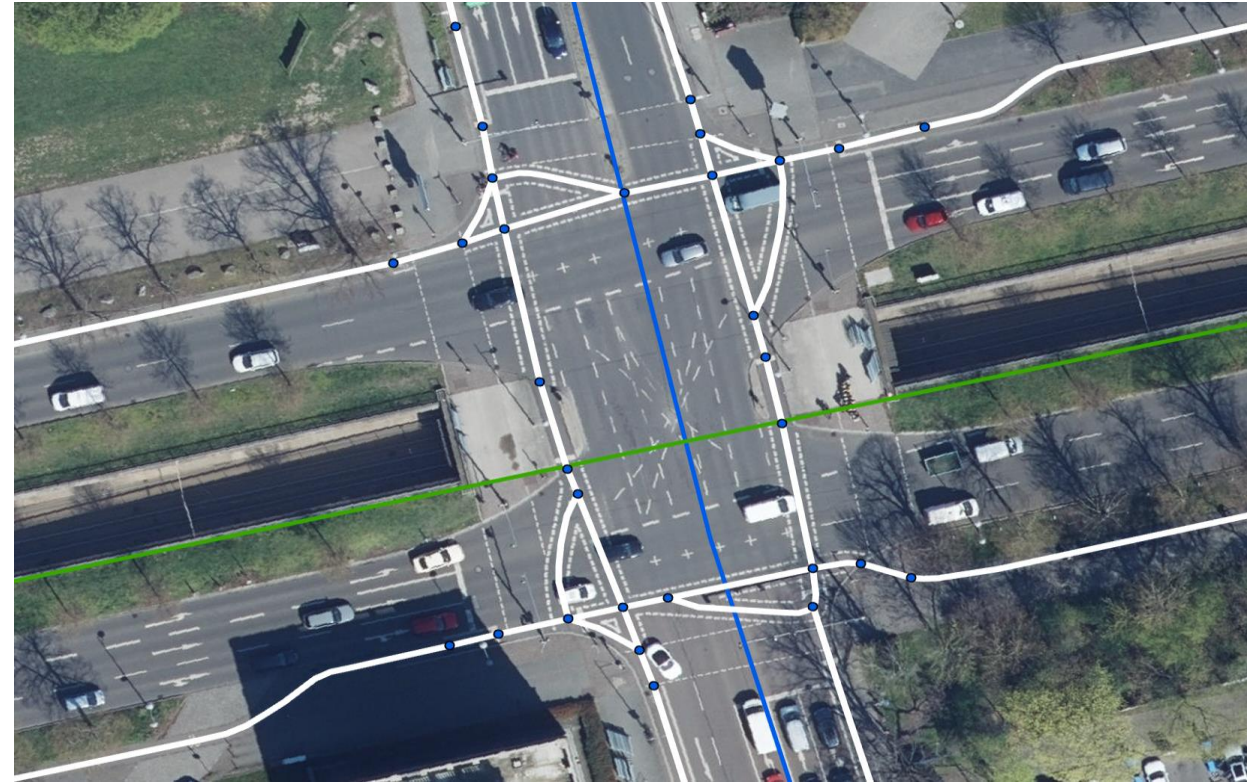
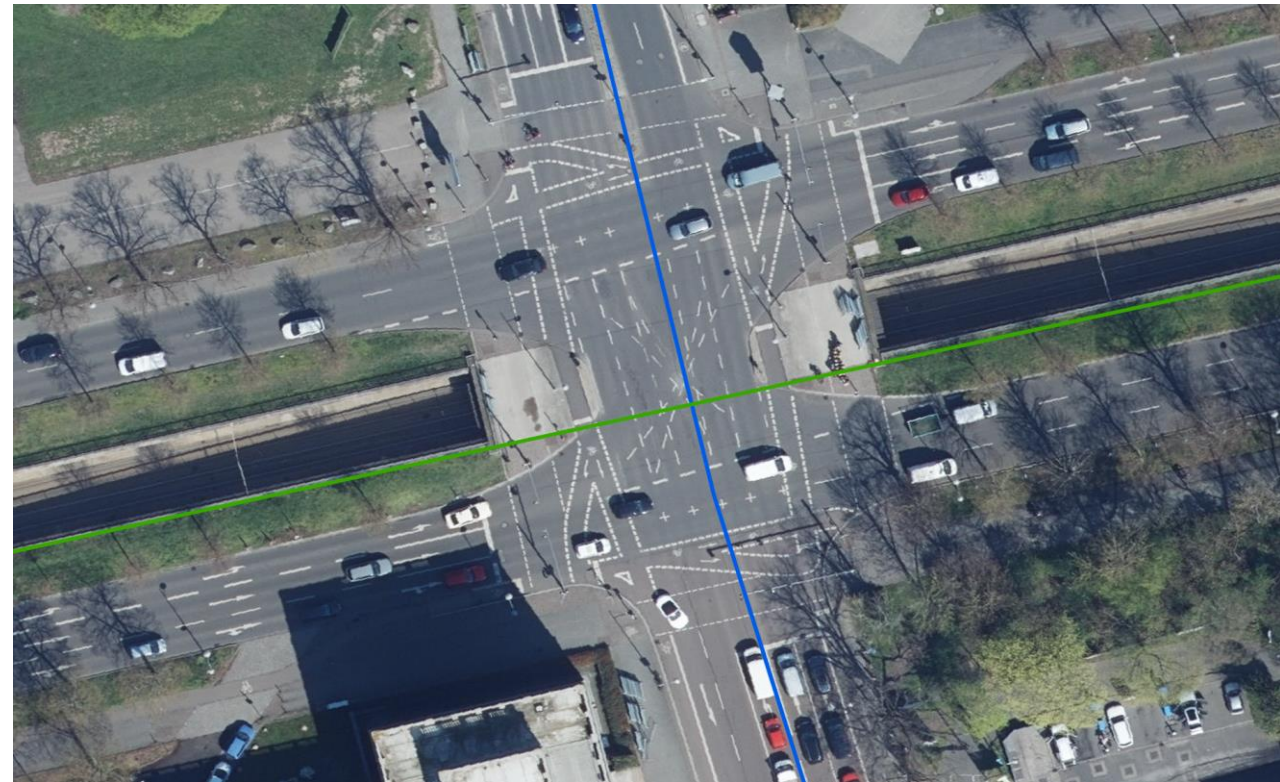
## Guide forms:

-  Mixed traffic
-  Mixed pedestrian / bicycle lane
-  Separated pedestrian / bicycle lane
-  Bicycle lane
-  Bicycle stripe on road (part of the road, separated with lines)
-  Protective lane (part of road, separated with broken lines)

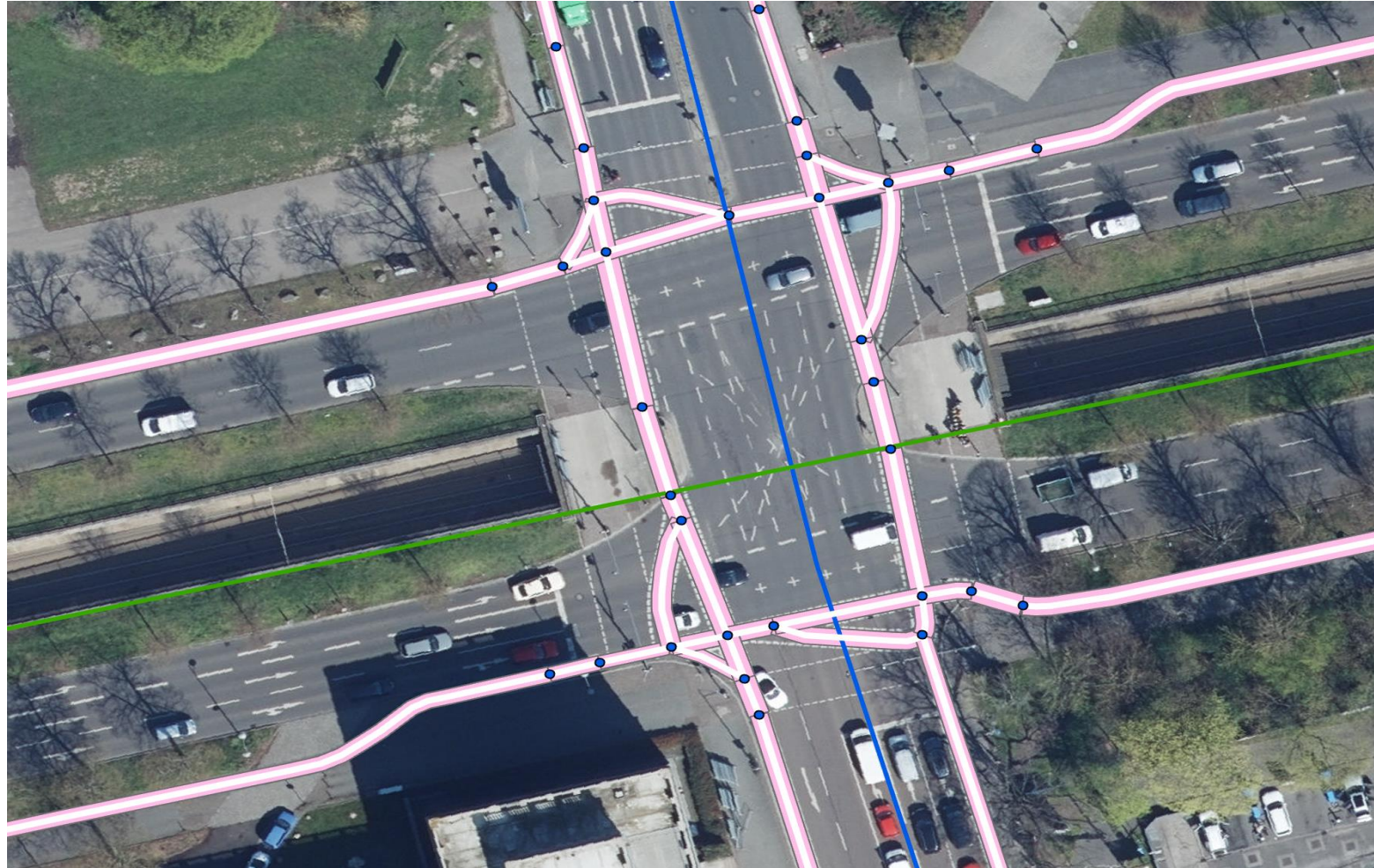




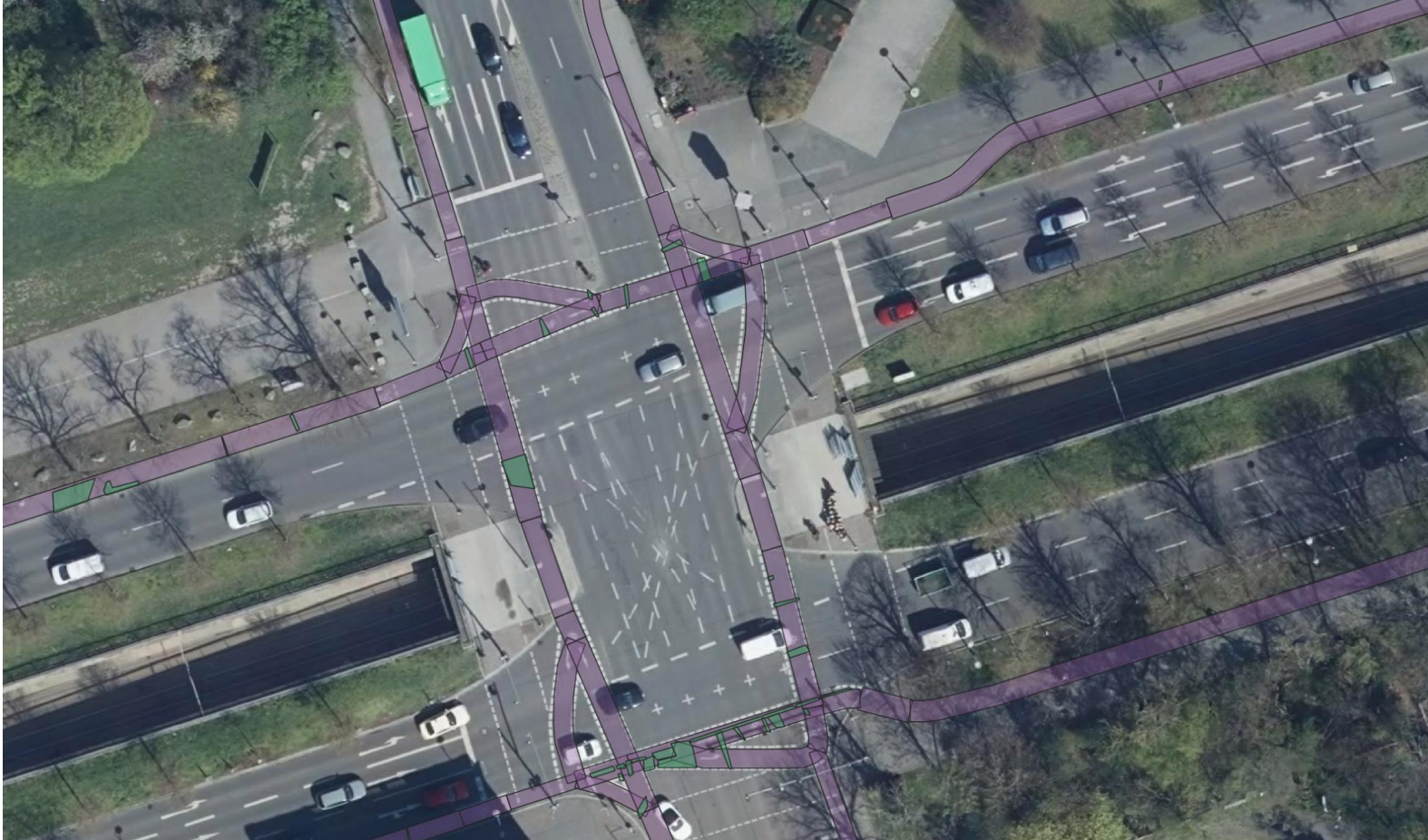
# Before - after




# Bicycle paths and areas

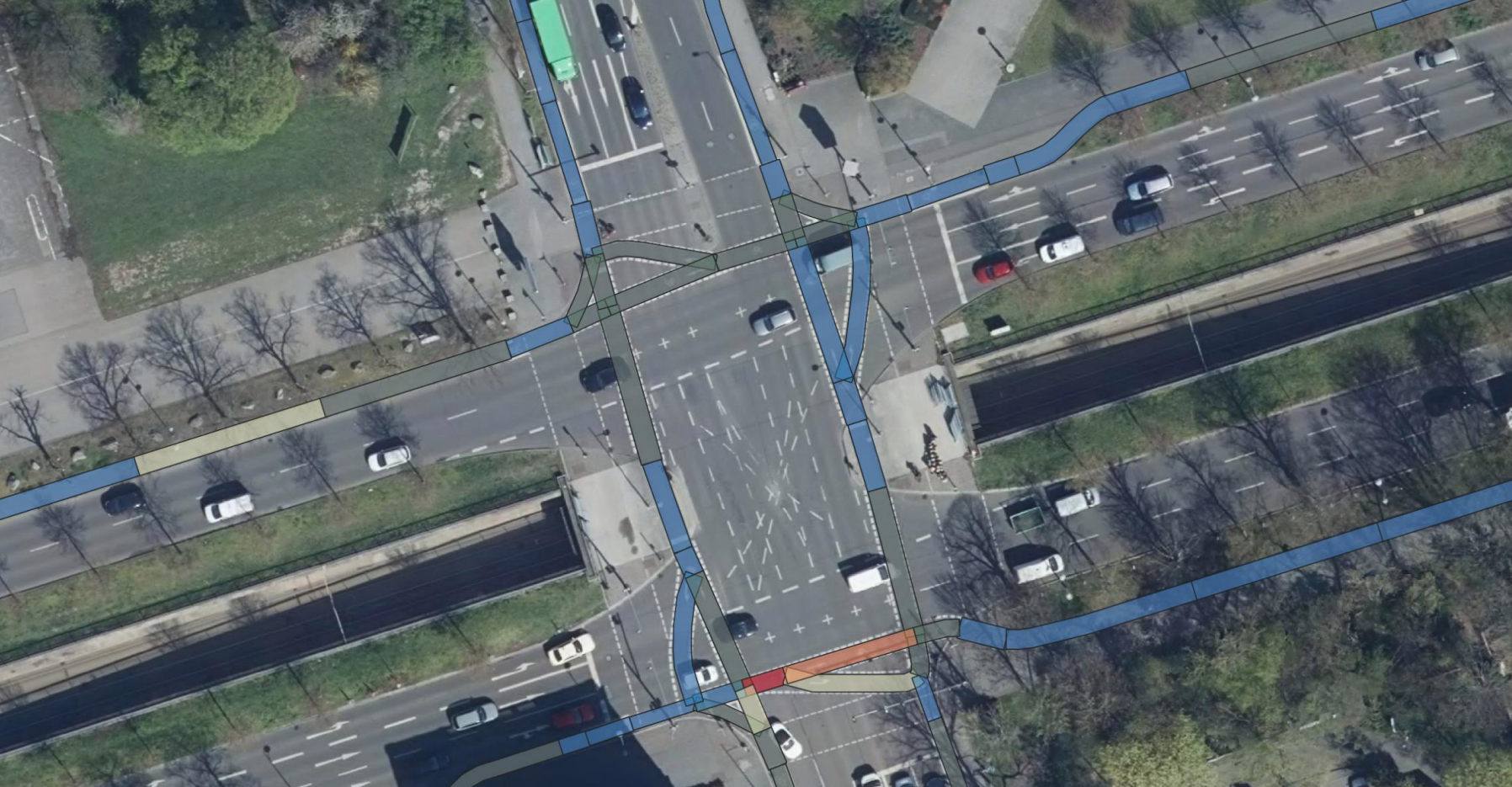


# Damages



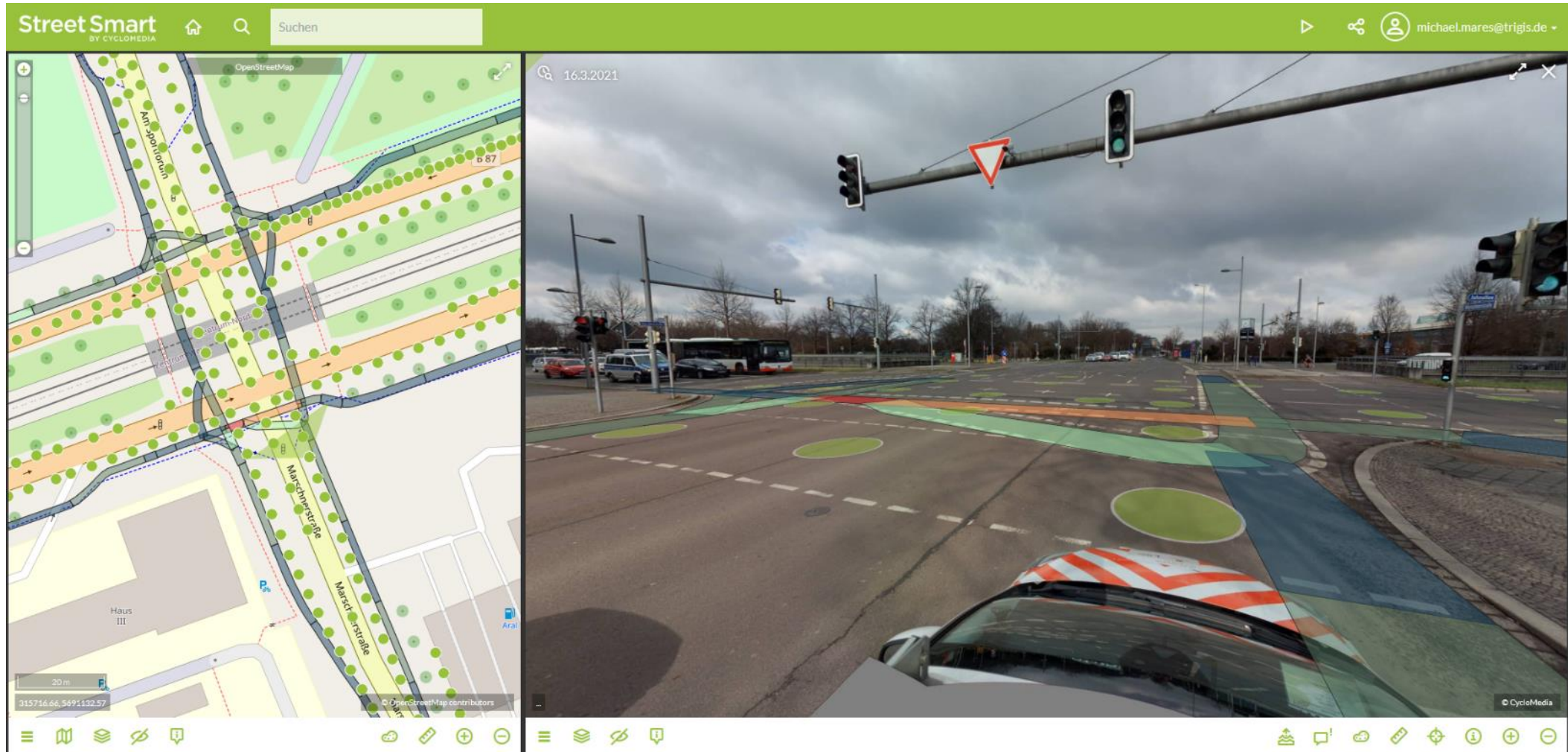
- Cracks 
- Patched areas
- Surface Damage
- Open seams / joints
- Potholes

# Road Condition Values



- 1 
- 2 
- 3 
- 4 
- 5 

# Visualisation in Street Smart



# Data Insights - overview Data Insights

- Traffic Signs
- Road surface analyse
- Street Lighting
- Traffic lights
- Road markings
- Guardrails
- Poles (reflector)
- Hecto meterposts
- Area mapping
- Surface types
- Pedestrian ramps
- Blinde geleide lijnen
- Parkeerspots
- Trees
- Potholes
- Drains
- Gas/Water connections
- Kabels
- Electrical cabinets
- Height of tunnels and bridges

# Thank you for your attention



Sales director Northern Europe  
tselvi@cyclomedia.com



accountmanager France  
aleregent@cyclomedia.com

jdewilde@cyclomedia.com